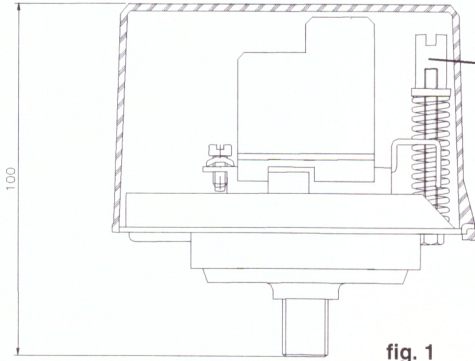




Climate & Industrial Controls

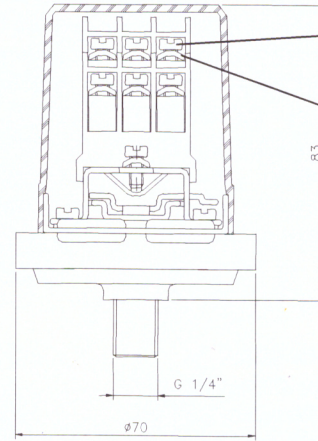
Serie PS325-1C SX

- Pressostato
- Pressure Switch
- Pressostat



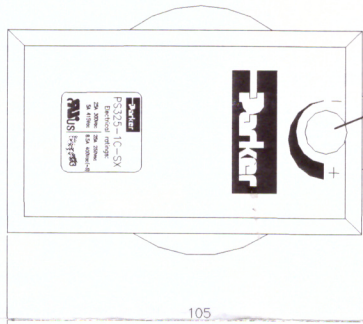
- Regolazione della pressione di intervento mediante cacciavite a taglio (Svitando si aumenta il valore).
 - Pressure regulation by screwdriver (screwing increases the value).
 - Réglage de la pression du intervention par tournevis à coupe (Dévissant on va à augmenter le valeur).

fig. 1

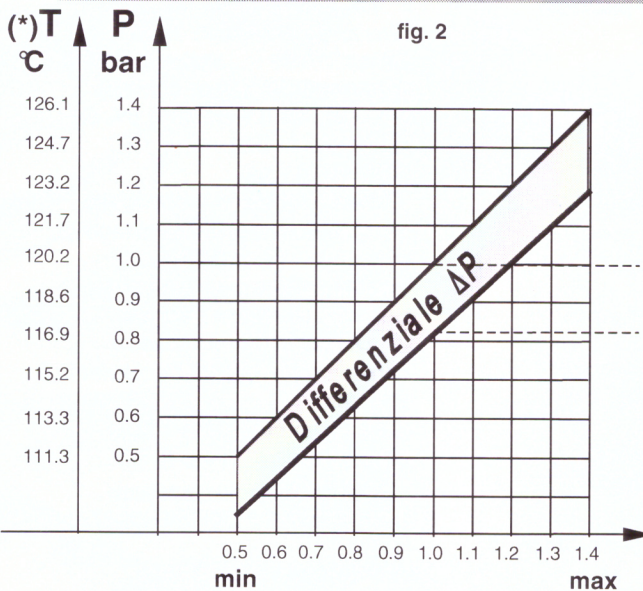


Serracavi a vite
Screws terminals
Serrecâbles a vis

Usare cavi
Use cables
Employer câbles
T >= 105°C



-Tappo per permettere la regolazione della pressione di intervento dall'esterno.
 -Cap to permit the pressure regulation from the outside.
 - Bouchon pour permettre la régulation de la pression du intervention à l'extérieur



Esempio-Example-Exemple
 Stacco P=1 bar (T=120.2°C)
 Off- éteint
 Attacco P=0.82 bar (T=117.2°C)
 On- attaque
 1 bar= 100 kPa
 (*) Temperatura di vapore acqueo.
 Dry steam temperature.
 Température du vapeur d'eau.

Alimentazione Trifase / Monofase connessione Power supply three-phase / Single phase connection

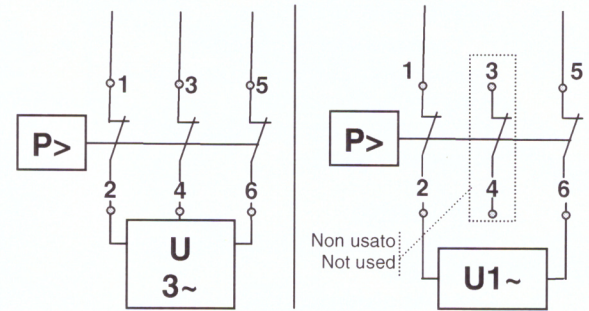


fig. 3

- Apre i contatti all'aumento della pressione.
- It opens the contacts when the pressure increases.
- Ouvre les contacts à l'augmentation de la pression.

| TIPO MODEL | Scala Range Echelle [bar] | Differenziale Fisso Fixed differential Différentielle Fixé [bar] | Pressione Max Max pressure Pression Maximal [bar] | Temperatura fluido Max temperature fluid Température max fluid | Temperatura max superficiale Max surface temperature Température max superficiel (Ts) | Temperatura max corpo Max body temperature Température max corp | Temperatura ambiente circostante Operating surrounding temperature Température d'exercice environnant |
|-------------|---------------------------|--|---|--|---|---|---|
| PS325-1C SX | 0.5 + 1.4 | 0.18 ± 0.03 | 2.1 | 140 °C | 80 °C | 80 °C | 50 °C |