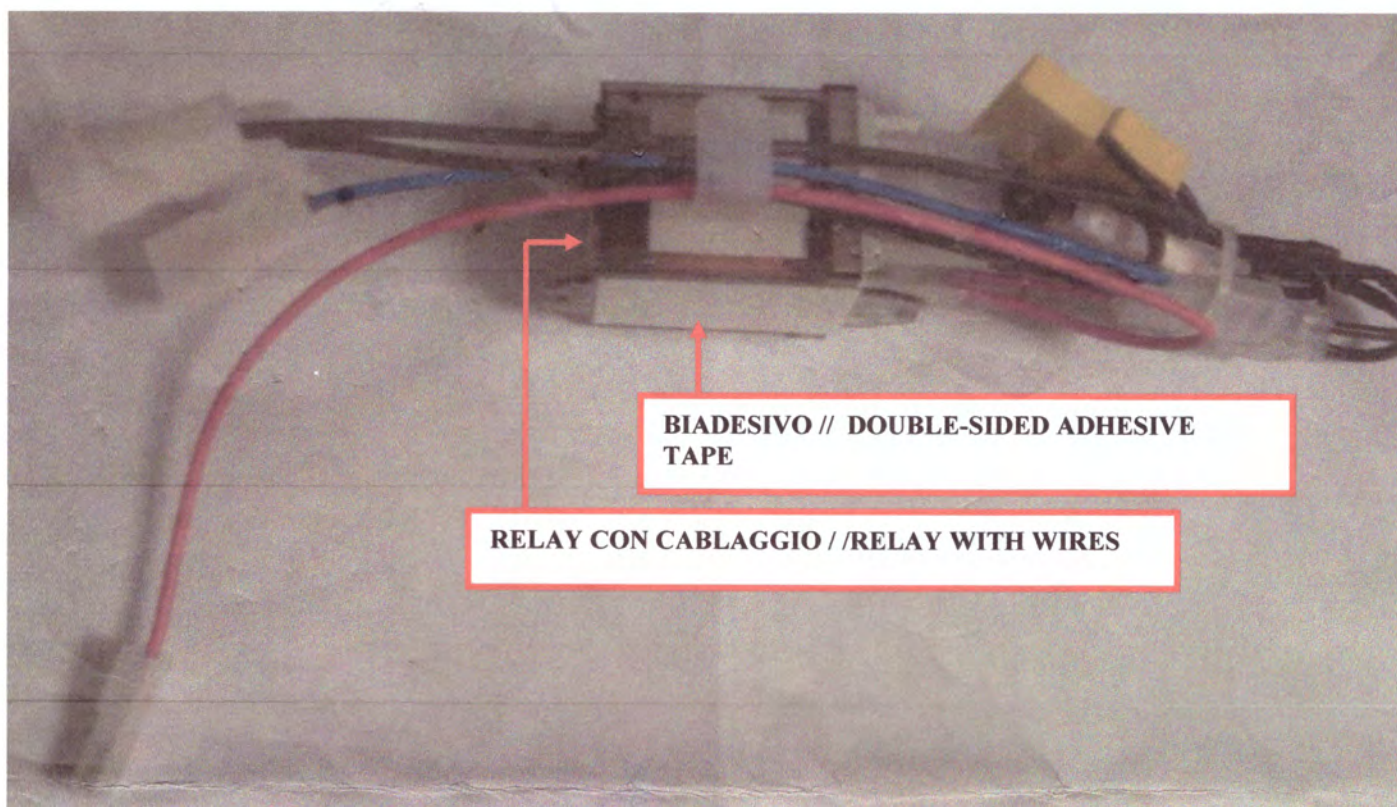


KC0012 KIT RELAY BZ07 rev.00
CONTENUTO DEL KIT / KIT CONTENT



Attenzione!! l'installazione del kit deve essere effettuata da personale qualificato

Warning!! The kit installation must be performed by a qualified technician

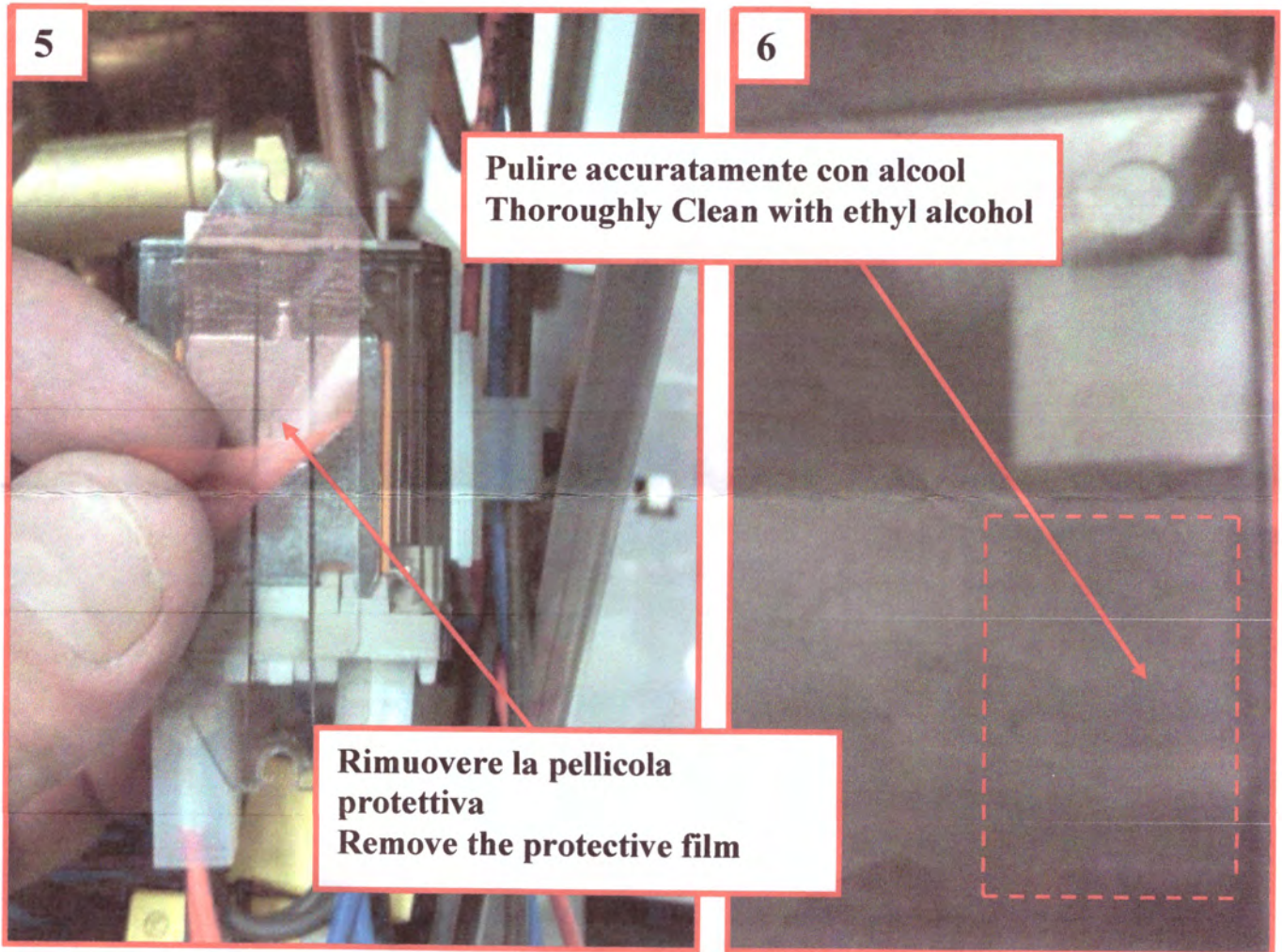
Attenzione!!! Prima di iniziare l'installazione assicurarsi che :

- LA MACCHINA SIA SCOLLEGATA DALLA RETE ELETTRICA
- LA MACCHINA SIA FREDDA IN TUTTE LE SUE PARTI
- LA CALDAIA NON SIA IN PRESSIONE, APRIRE I RUBINETTI BIBITA

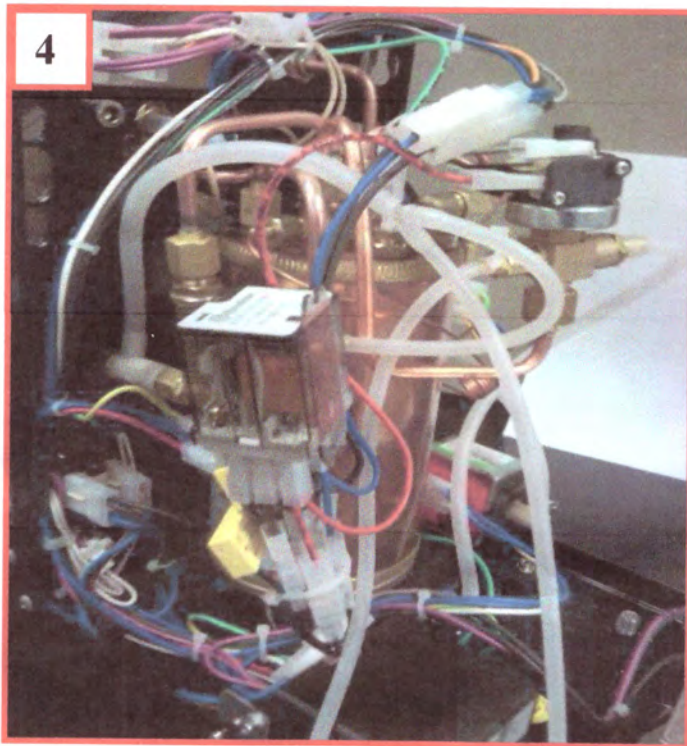
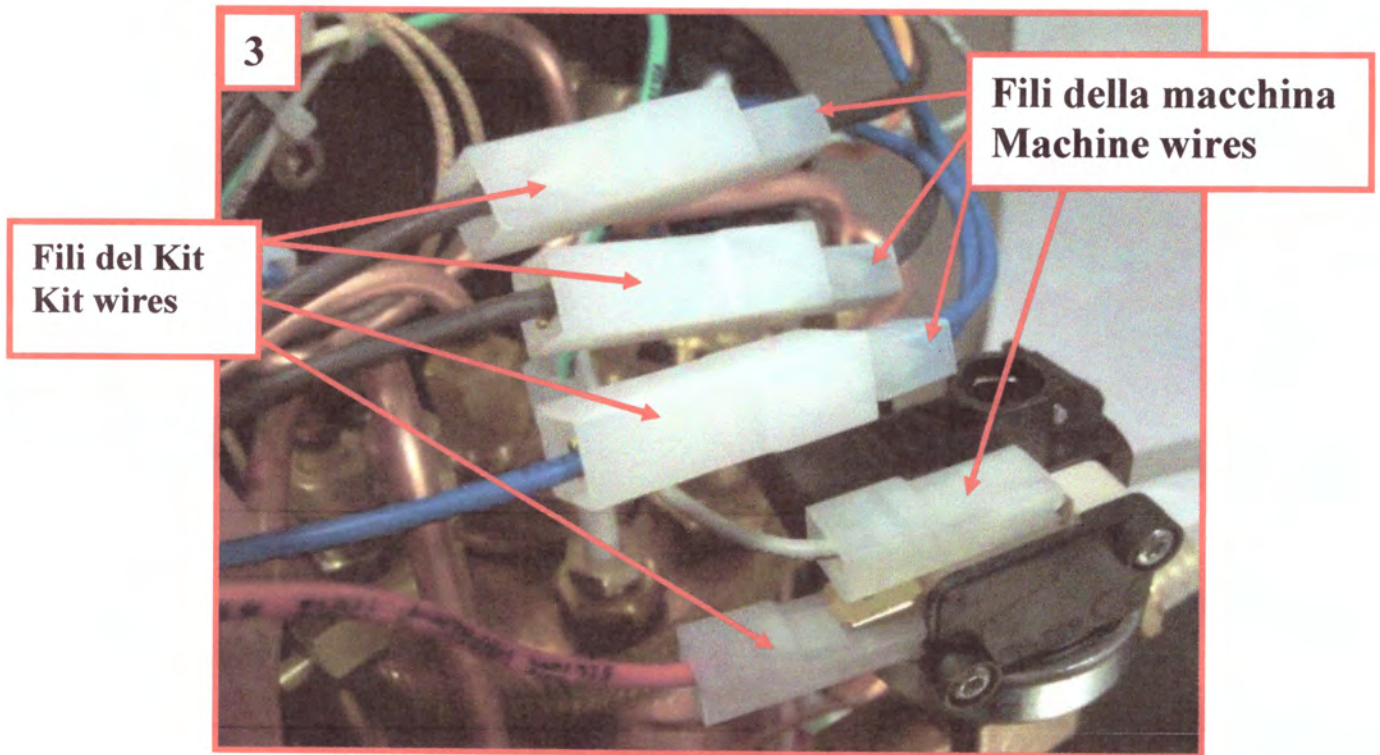
Warning!!! Before installing the kit, check that :

- THE MACHINE IS DISCONNECTED FROM THE ELECTRICAL POWER
- ALL PARTS OF THE MACHINE ARE COLD
- THE BOILER IS NOT UNDER PRESSURE, OPEN THE STEAM AND THE WATER TAPS

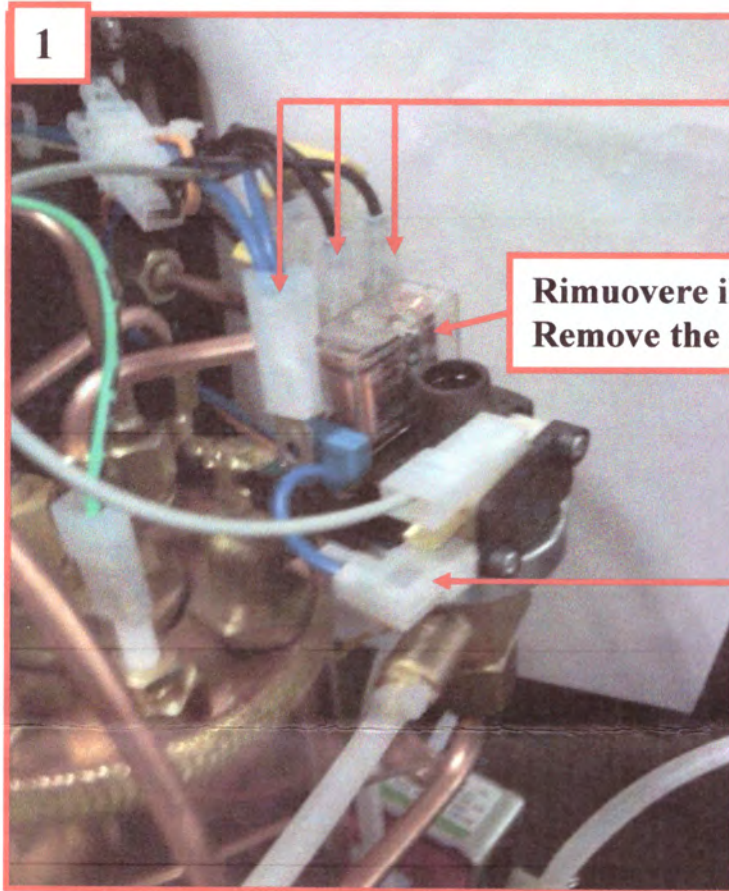
4. Pulire accuratamente la superficie del supporto serbatoio con alcool foto (6)
Thoroughly clean the tank support surface with ethyl alcohol
see picture (6)
5. Rimuovere la pellicola protettiva ed incollare il relay al supporto serbatoio vedere foto (5) e (7)
Remove the protective film and stick the relay on the tank support,
see picture (5) and (7)



3. Connettere il cablaggio del kit al cablaggio macchina come in foto (3) e (4)
Connect the kit wires to the machine wires like in picture (3) and (4)

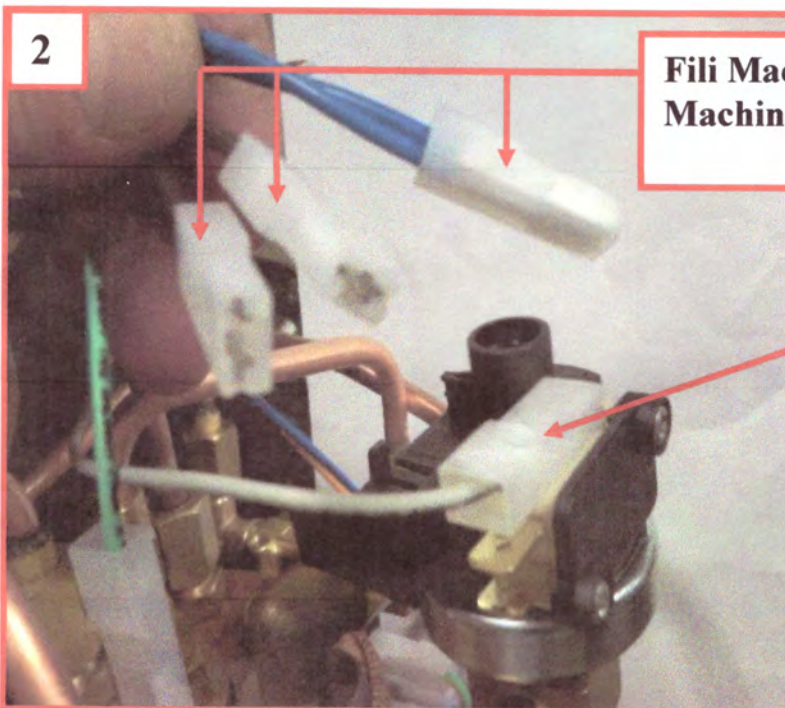


1. Disconnettere i fili come indicato in foto (1) e (2)
Disconnect the wires like a picture (1) and (2)
2. Rimuovere il vecchio relay e i filtri RC come in foto (1) e (2)
Remove the old relay and the RC filters like in picture (1) and (2)



**Disconnettere
Disconnect**

**Rimuovere il relay
Remove the relay**



**Fili Macchina liberi senza filtro RC
Machine Wires free without RC filters**

**Non Disconnettere
Do not disconnect**

6. Sistemare tutti i cavi e controllare che i tubi in silicone non siano strozzati -
foto (7)
Arrange all the wires and make sure that the silicon pipes are not clamped -
picture (7)

